

TOWN OF LYME
NATURAL RESOURCE INVENTORY
WILDLIFE AND UNIQUE HABITATS
AUGUST 2007

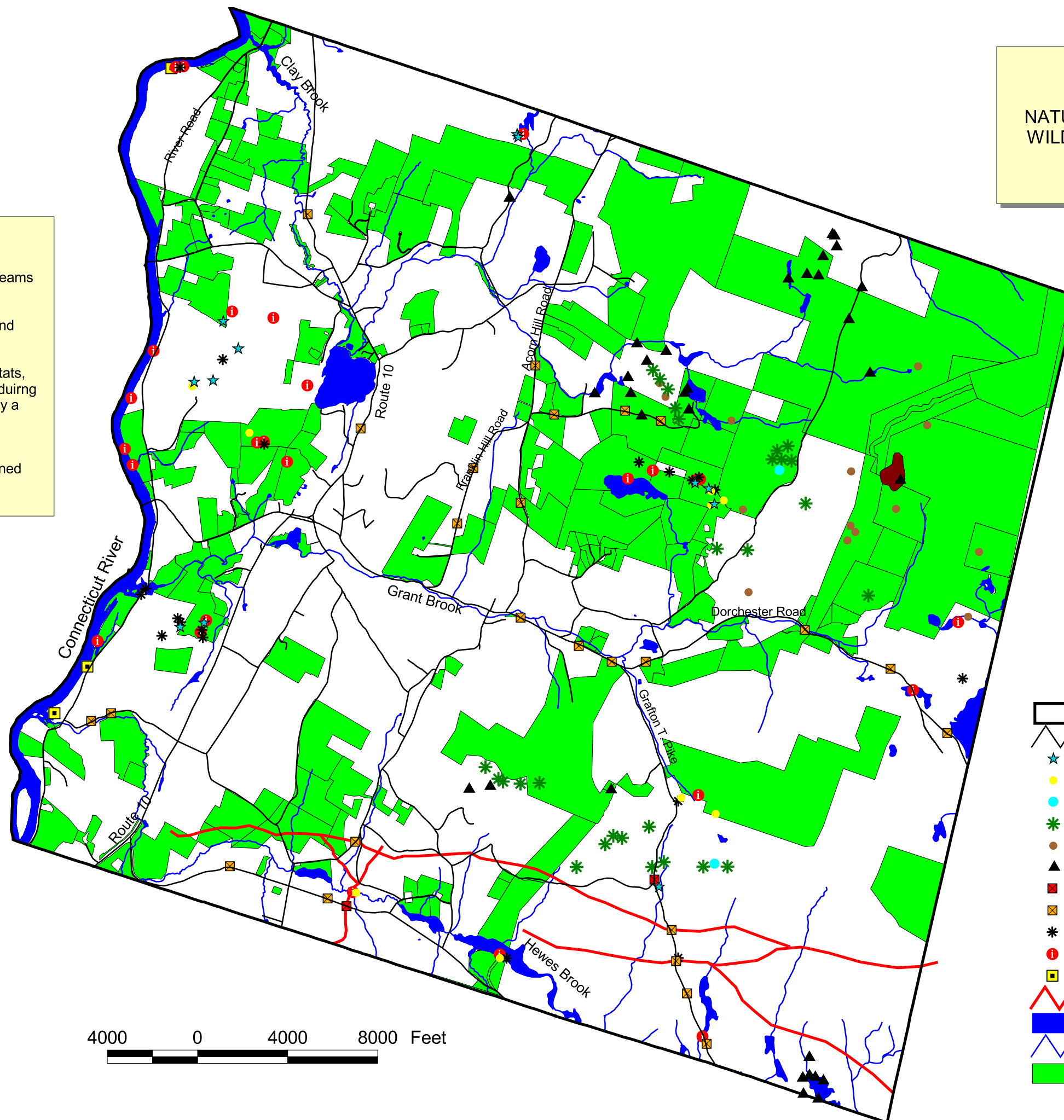
Data Sources

Town Boundary, Roads, Open Water, and Streams obtained from GRANIT.

Conservation Lands obtained from GRANIT and the Town of Lyme.

Vernal Pools, Erosion Problems, Unique Habitats, Unique Plants, Animals Observed identified during field work by WTW with a GPS point taken by a Garmin III+ handheld unit.

Bear habitat points and Lyme Conservation Commission (LCC) field inventory data obtained from the Town of Lyme.



LEGEND

- Town boundary
- Roads
- Vernal pools
- Unique habitats
- Bear wallows
- Bear trees
- Bear dens
- LCC Volunteer Fieldwork Inventory
- LCC wildlife crossings - 2007
- LCC Wildlife crossings - 1985
- Unique plants observed - 2006
- Animals observed - 2006
- Erosion problem areas
- Wildlife travel corridor
- Ponds and open water
- Rivers and streams
- Conservation land

MAP PRODUCED BY:
WATERSHED TO WILDLIFE, INC.
42 MILL ST., SUITE 3
LITTLETON, NH 03561
(603) 444-0000
www.watershedtowildlife.com

4000 0 4000 8000 Feet

