
[NHDOT PROJECT WEBSITE](#)

[CONTACT THE TEAM](#)

Lyme-East Thetford Bridge 14460 Rehabilitation Project



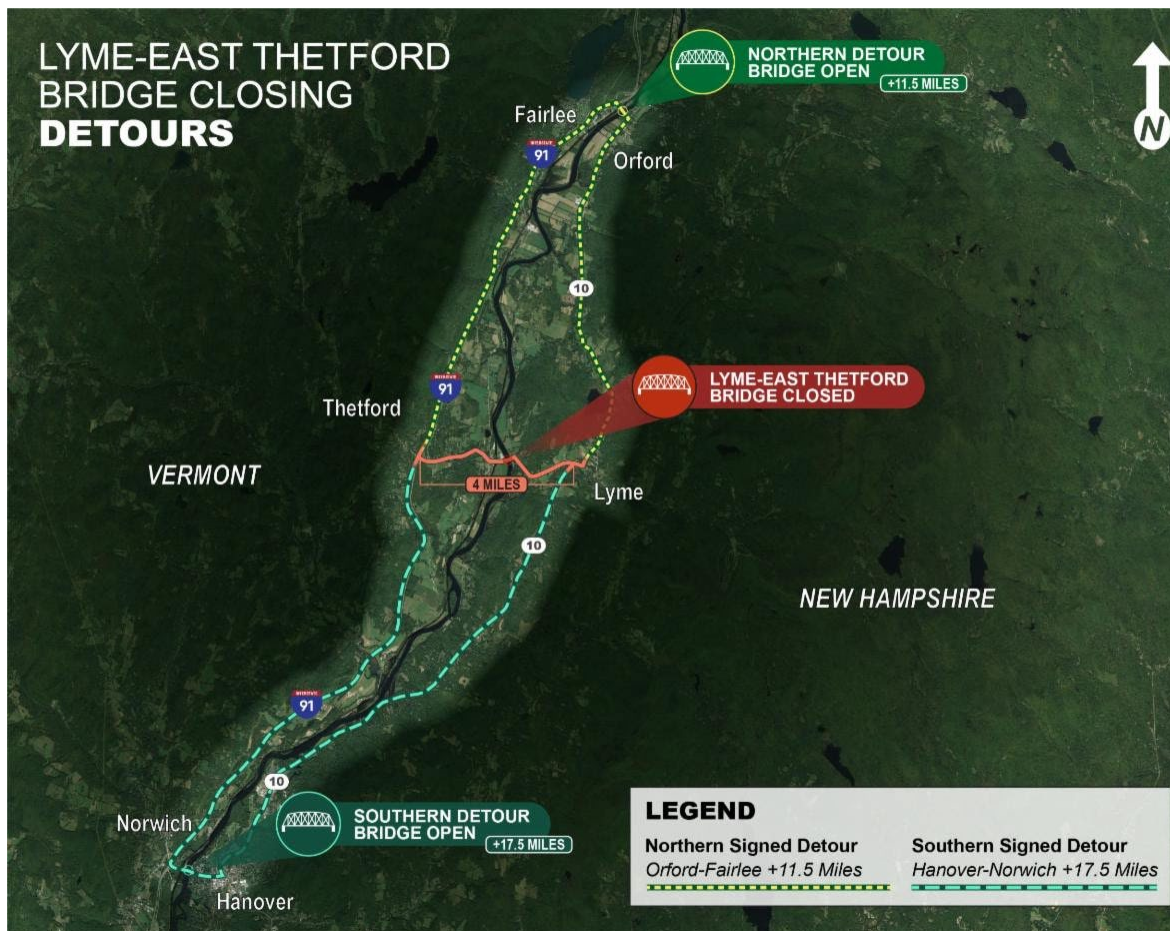
As construction is set to begin on the Lyme-East Thetford Bridge Rehabilitation Project, the New Hampshire Department of Transportation (NHDOT) is focused on sharing project updates, milestones and planned activities with area residents, commuters, and local businesses. This is the inaugural monthly Lyme-East Thetford Bridge Rehabilitation Project newsletter. These monthly emails will provide updates on project milestones, construction progress, and the work planned for the coming month.

What to Expect this Month

The project is ready for construction and the contractor New England Infrastructure, Inc. will be mobilizing and beginning construction this month, April 2023. Throughout the 18-month construction process, the bridge will be closed to motor vehicle, bicycle and pedestrian traffic. **The bridge will close at 9 a.m. on Thursday, April 27, 2023.** Two signed

detour routes will be in place throughout the closure. The northern detour between Orford, NH and Fairlee, VT, and the southern detour, between Hanover, NH and Norwich, VT. The detour graphic below illustrates the detour routes.

Throughout spring, crews will be conducting pier repairs and painting. A tarp will be set up over sections of the bridge to facilitate painting activities.



Throughout the 18-month Lyme-East Thetford bridge closure, there will be two NHDOT signed detour routes in place. A detour route to the north, takes vehicles along NH Route 10 then crosses the Connecticut River between Orford, NH and Fairlee, VT and continues along Interstate 91 south in Vermont. The other detour route to the south, takes vehicles along NH Route 10 then crosses the Connecticut River between Hanover, NH and Norwich, VT and continues along Interstate 91 north in Vermont.

Project Background

Since 2013, the Lyme-East Thetford has been on the [NH State Red List](#). Bridge rehabilitation is required to maximize the life, address structural deficiencies, and restore the load carrying capacity for passenger vehicles and trucks.

Based on the bridge's classification on the National Register for Historic Places, NHDOT and the Vermont Agency of Transportation (VTrans) are required to comply with Section 4(f) of the United States Department of Transportation (USDOT) Act of 1966. Section 4(f) requires NHDOT and VTrans to select a design alternative that results in the least overall hard to historical resources, recreation facilities and wildlife and waterfowl refuges.

The bridge rehabilitation is being funded by Federal and State (NH & VT) funds. Projects receiving Federal Highway Administration (FHWA) funding must be developed in accordance with the National Environmental Policy Act of 1969 (NEPA). The NEPA process ensures environmental considerations are incorporated in planning and decision-making. The NEPA process also mandates the opportunity for public comment on the project. Three public meetings were held between 2014 and 2022 for the public to learn more about the project. The project completed the NEPA process in 2019.



Keep In Touch

Want to learn more about the project? Check out the project factsheet or past presentations from public meetings on the [project website](#).

Be on the lookout for our next project update email in May. In the meantime, if there are questions for the project team you are welcome to contact email us.

Contact Us
info@LymeThetfordbridge.com

[Project Website](#)
