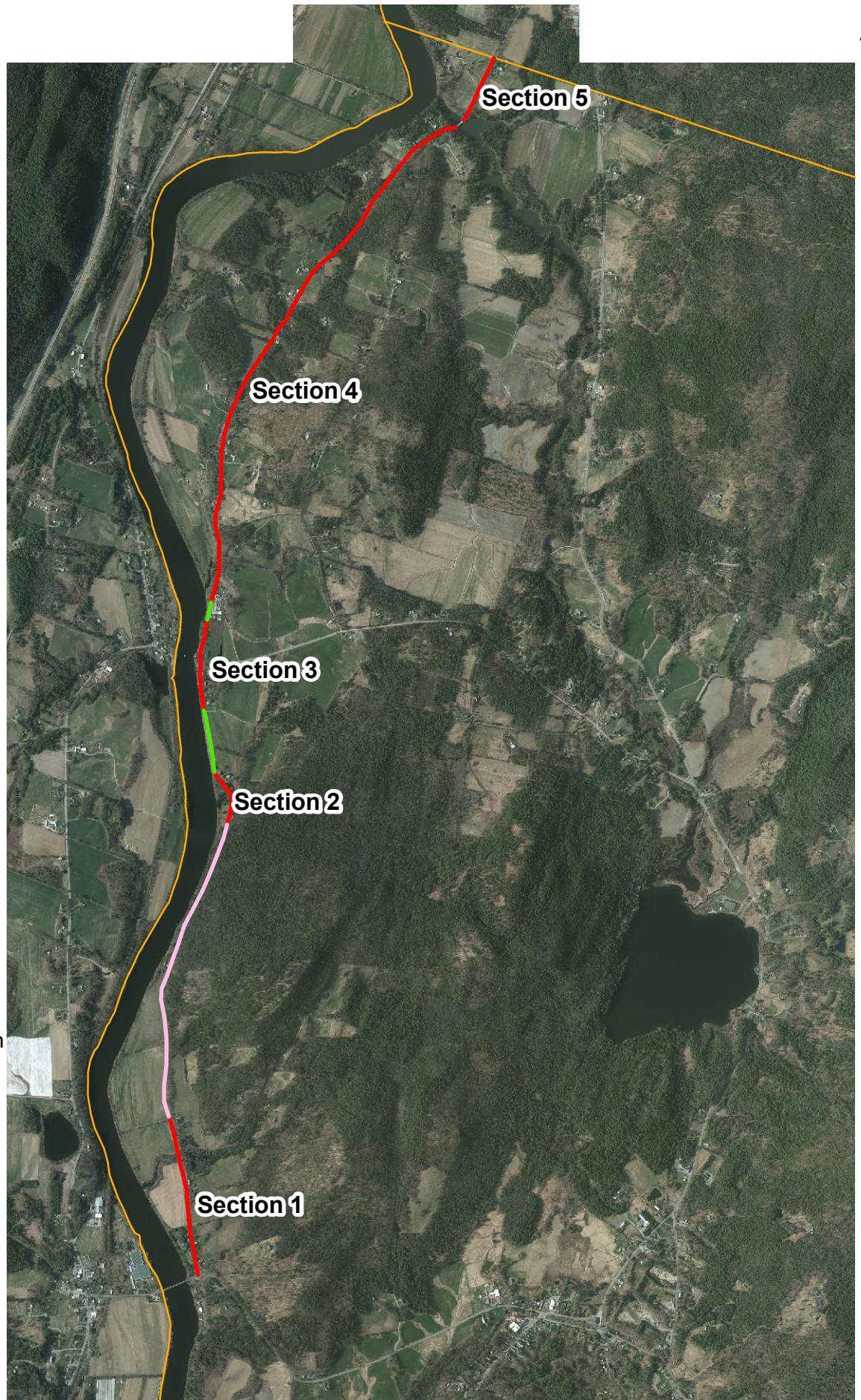


# River Road North Paving Map

Cole Williams  
Town Of Lyme, 2021

N



## Legend

- Town Line
- Dirt Section
- Bank Repair Section
- Berway Repair Section
- Section 1: 2815 ft
- Section 2: 1038 ft
- Section 3: 1601 ft
- Section 4: 9848 ft
- Section 5: 1204 ft

\*Only the sections in red  
are to be paved

\*Total pavement length ~ 16,506

0 1,250 2,500 5,000 7,500 10,000 Feet

1 inch = 2,500 feet