

# Keys to the Valley Newsletter

## HOMES IN FOCUS

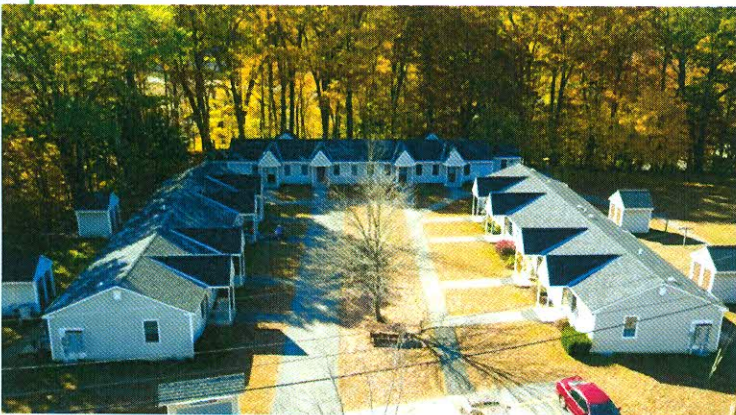
### Supportive Housing

Is it fair that our neighbors who are differently abled or struggling with a life event may need to leave the region because they can't find a home here that they can thrive in? We believe this should be an individual's choice, not a requirement due to a lack of housing options in this region. This means that our communities must meet the need for Supportive housing. These are homes with flexible services that help vulnerable people access and maintain the housing and community supports needed to live independent and dignified lives, within the income available to them.

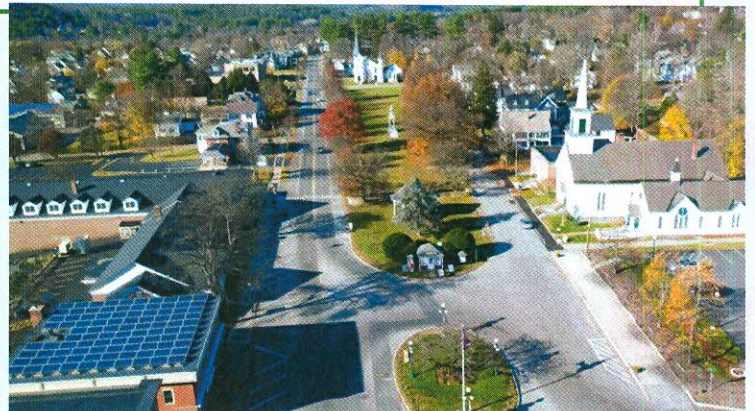
This is why we are assessing the need and resources for supportive housing in the region. If you know of a place that provides these services, please reach out to Olivia Uyizeye ([ouyizeye@uvlsrpc.org](mailto:ouyizeye@uvlsrpc.org)) or take the survey [www.surveymonkey.com/r/KTTVsupportivehomesurvey](http://www.surveymonkey.com/r/KTTVsupportivehomesurvey)

*Learn more from:*

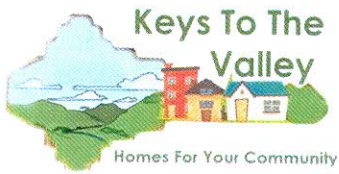
- ✓ [Beyond Aging in Place – Thriving in Supportive Housing by the Corporation for Supportive Housing \(CSH\)](#)
- ✓ [Quality Supportive Housing Guidebook by \(CSH\)](#)
- ✓ [A Case Study from NH – Compass House](#)
- ✓ [A Case Study from VT – Housing Trust of Rutland County](#)



Springfield, VT  
Photo by Braxton Freeman



Newport, NH  
Photo by Braxton Freeman



# Keys to the Valley Newsletter

Happy New Year from Keys to the Valley!

We have a lot of updates for you this month. To start, Braxton Freeman has finished his work taking photos of our region's diverse homes. We are very pleased with what he captured and look forward to sharing it throughout the initiative. Please enjoy a few highlights we have included in this newsletter.

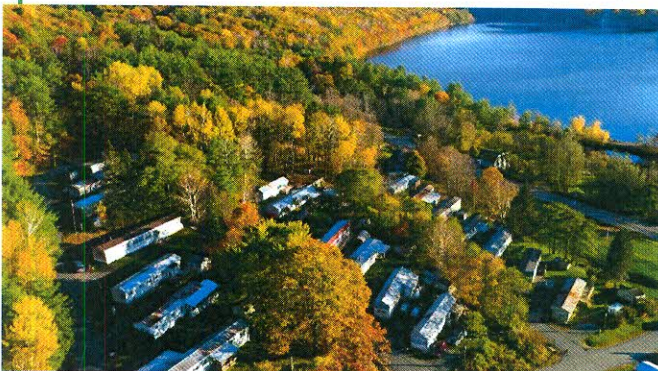
Our data team has also been busy collecting information on our region – from the number of households to the age of our housing stock. They are now in the midst of a survey to learn more about supportive housing (see Homes in Focus on the next page), projecting the region's housing needs out to 2030, and setting up an open data portal for residents and organizations to use.

We are also undertaking multiple surveys. Some are to learn more from a particular group of stakeholders, such as employers, while others are to hear the opinions and stories of residents. Presently, we are asking our region's municipal staff and volunteers (e.g. planners, planning boards, zoning administrators, town managers) to share

how infrastructure connects to their communities homes, current and future.

We have another important survey coming soon on public opinion. Our consultant, PlaceSense, will be working to identify what residents think about the state and future of our region's homes. In an effort to capture perspectives from every community, PlaceSense plans to work with local *captains* to promote the survey. In the Spring, follow up focus groups meetings on housing perspectives will take place. We welcome your involvement!

Finally, the Steering Committee met this month to review the progress and next steps for the initiative. Their advice and guidance is integral to crafting messaging and producing deliverables that have meaning for our communities.



*Enfield, NH*  
Photo by Braxton Freeman



*Wilder, VT*  
Photo by Braxton Freeman