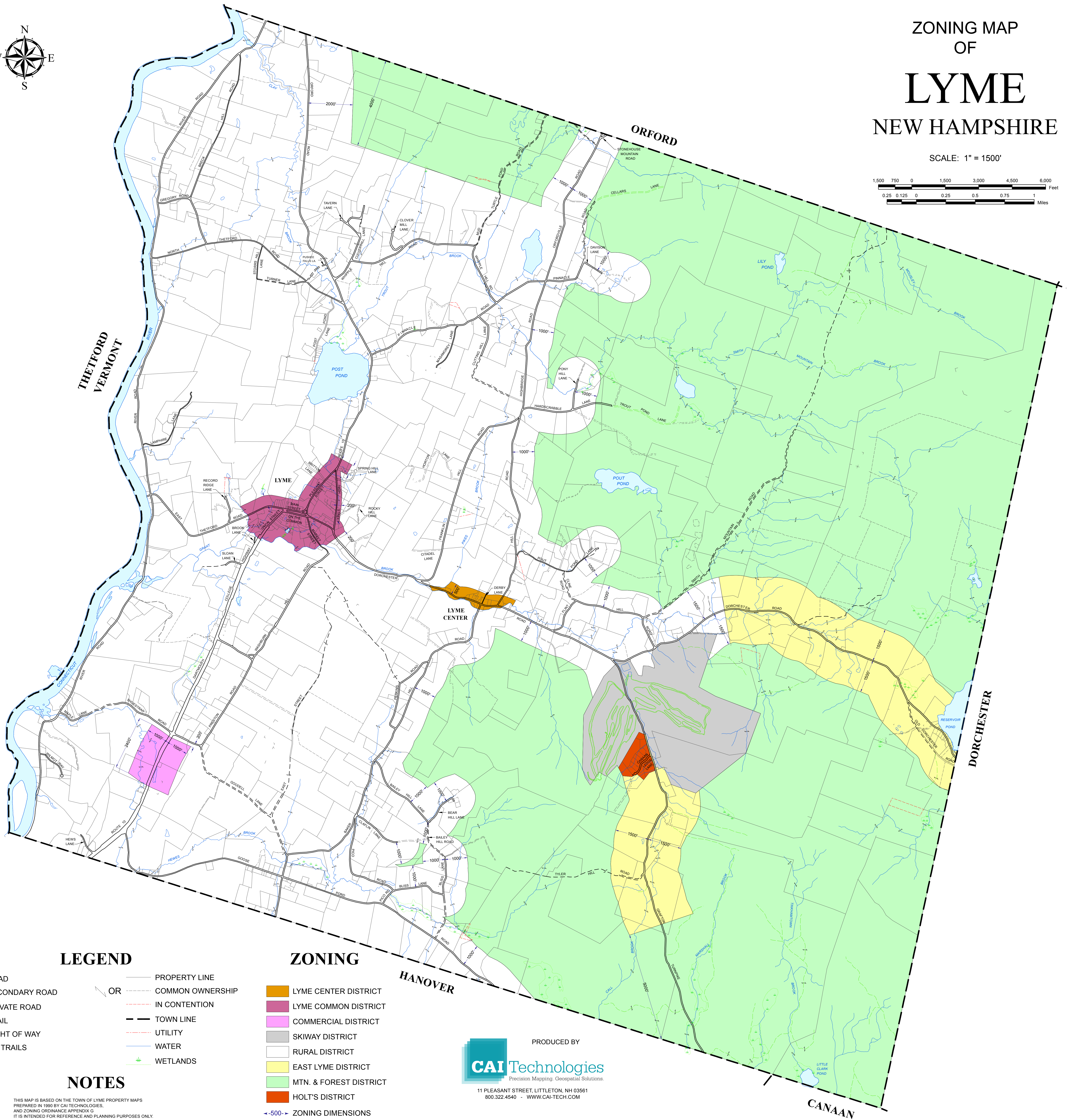
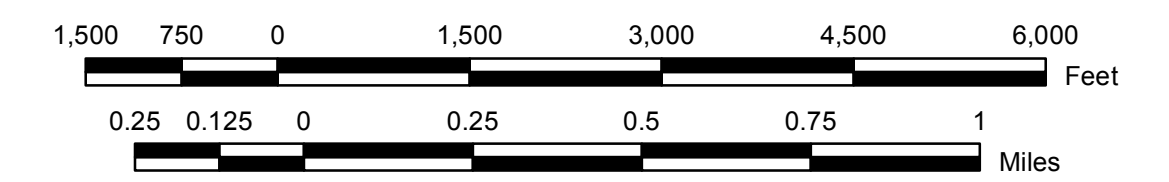


ZONING MAP OF LYME NEW HAMPSHIRE

SCALE: 1" = 1500'



LEGEND

- ROAD
- SECONDARY ROAD
- PRIVATE ROAD
- TRAIL
- RIGHT OF WAY
- SKI TRAILS
- PROPERTY LINE
- COMMON OWNERSHIP
- IN CONTENTION
- TOWN LINE
- UTILITY
- WATER
- WETLANDS

ZONING

- LYME CENTER DISTRICT
- LYME COMMON DISTRICT
- COMMERCIAL DISTRICT
- SKIWAY DISTRICT
- RURAL DISTRICT
- EAST LYME DISTRICT
- MTN. & FOREST DISTRICT
- HOLT'S DISTRICT

-500- ZONING DIMENSIONS

NOTES

THIS MAP IS BASED ON THE TOWN OF LYME PROPERTY MAPS PREPARED IN 1999 BY CAI TECHNOLOGIES, AND ZONING ORDINANCE APPENDIX G. IT IS INTENDED FOR REFERENCE AND PLANNING PURPOSES ONLY. PROPERTY LINES CURRENT TO APRIL 1, 2015.

PRODUCED BY



11 PLEASANT STREET, LITTLETON, NH 03561
800.322.4540 - WWW.CAI-TECH.COM