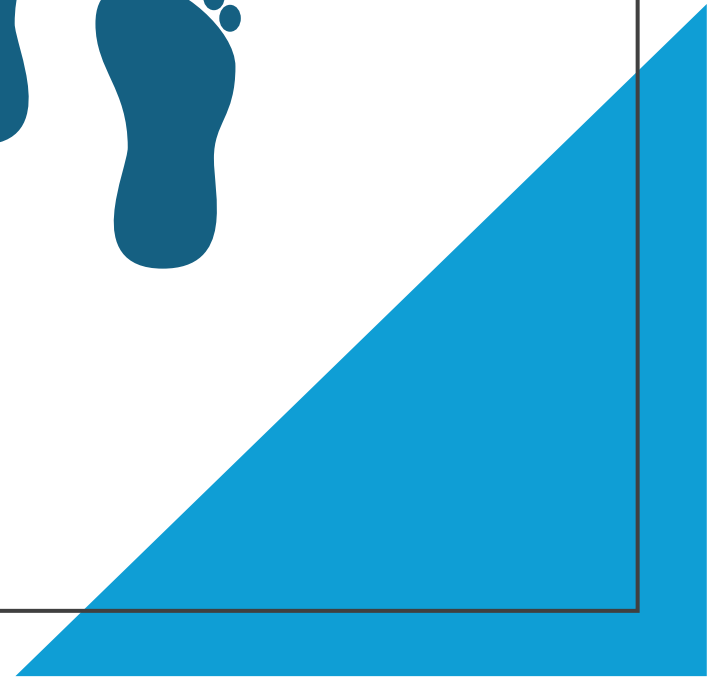


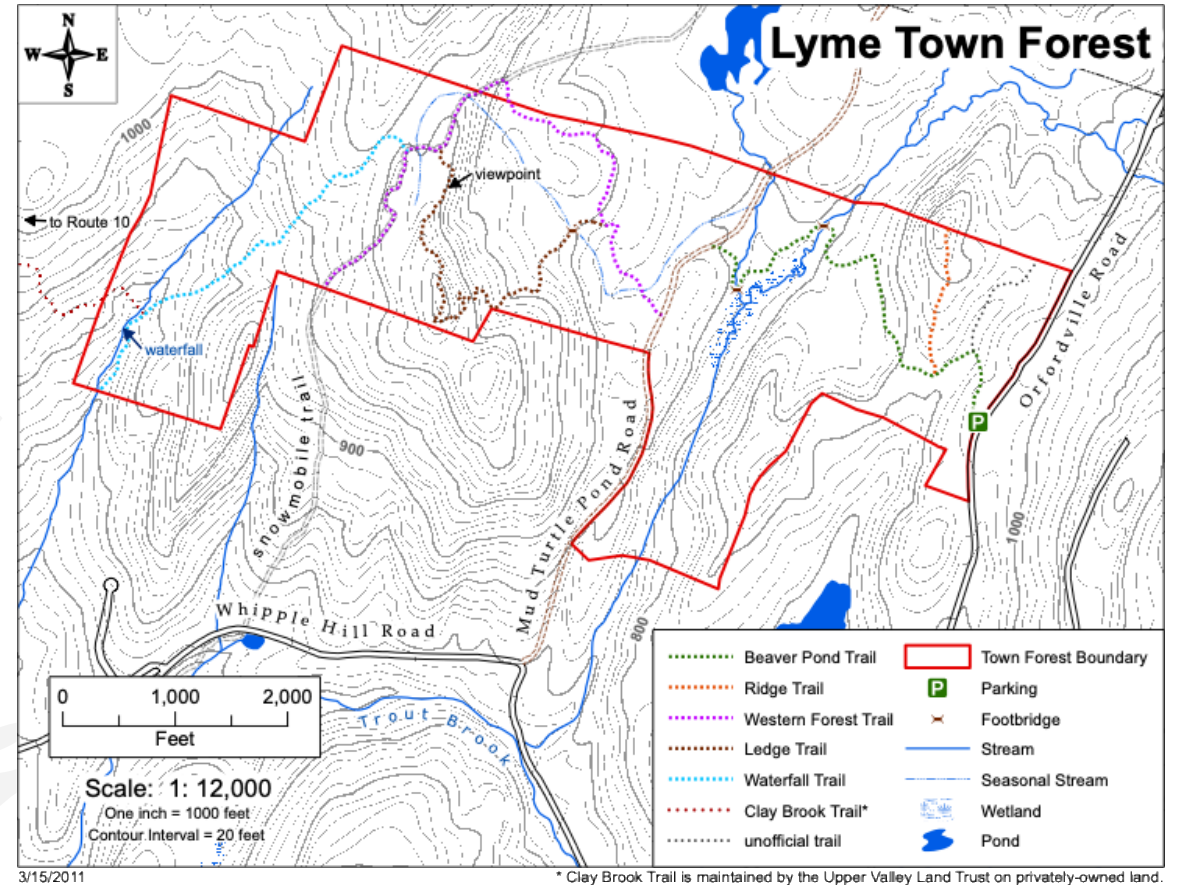
Take a Walk in the Lyme Town Forest

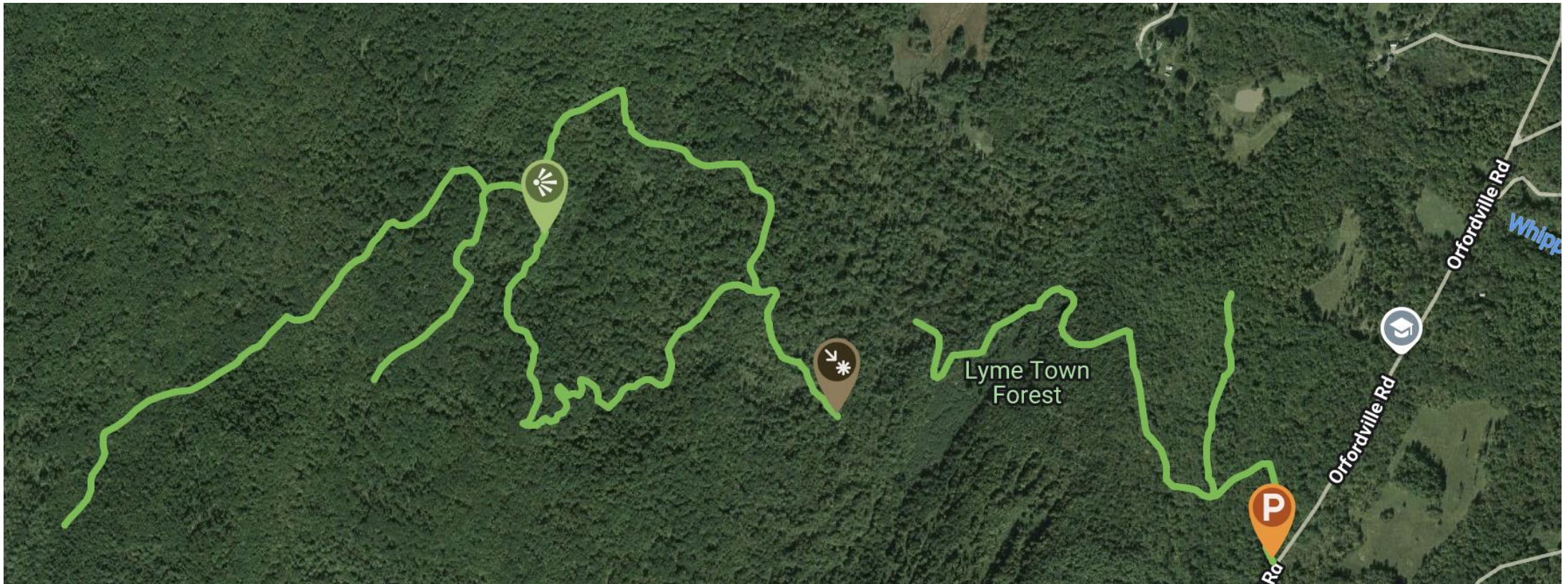
Showcasing recent trail maintenance work



The Lyme Town Forest

- Total current area is 425 acres.
- It is comprised of three parcels.
 - the first was acquired in the 1950s from the Seigny Lumber Co.
 - (In 1994, the Annual Town Meeting voted to designate it a "town forest.")
 - subsequent parcels were added in 2002 and 2009





There are several trails. You can find more at Trail Finder's web page for Lyme Town Forest.

- One entrance, with parking, is off Orfordville Road.
- Directions: From Lyme Common, travel 1.6 miles north on Route 10. Turn right onto Pinnacle Road. In 1.6 miles turn left onto Orfordville Road. Look for the large blue sign marking the Town Forest parking area, on the left in 0.8 miles. The trail starts here.

How best to take a walk in the Town Forest?

Here is another option.

The Clay Brook Trail entrance can be accessed from NH Route 10*.

The footbridge in the foreground crosses an unnamed stream.

This bridge was replaced in August 2025 by the Upper Valley Trails Alliance's High School Trails Corps.



* From the Lyme village Common, head north on Route 10 for 3.3 miles, past Post Pond and the North Thetford Road. Clay Brook parallels Route 10 on the left, and after a series of rolling curves, the road straightens out and goes through a sharp dip. A house and barn will be on your right, a field on the left. Trailhead parking for both the east and west segments of the trail is at the north end of the field.

Here's the crew
from the Upper
Valley Trails
Alliance's HS
Trails Corps
with the new
bridge.



Follow the stream downhill from the footbridge a short ways, and you'll come to a waterfall.



Return to the
footbridge and
head east.
You're now on
the Western
Town Forest
Trail.



After a half mile or so, you'll come to "The Ledge Trail" trailhead.



It's a
challenging
climb



But the view
north to Mt.
Cube and Mt.
Moosilauke is
worth it!

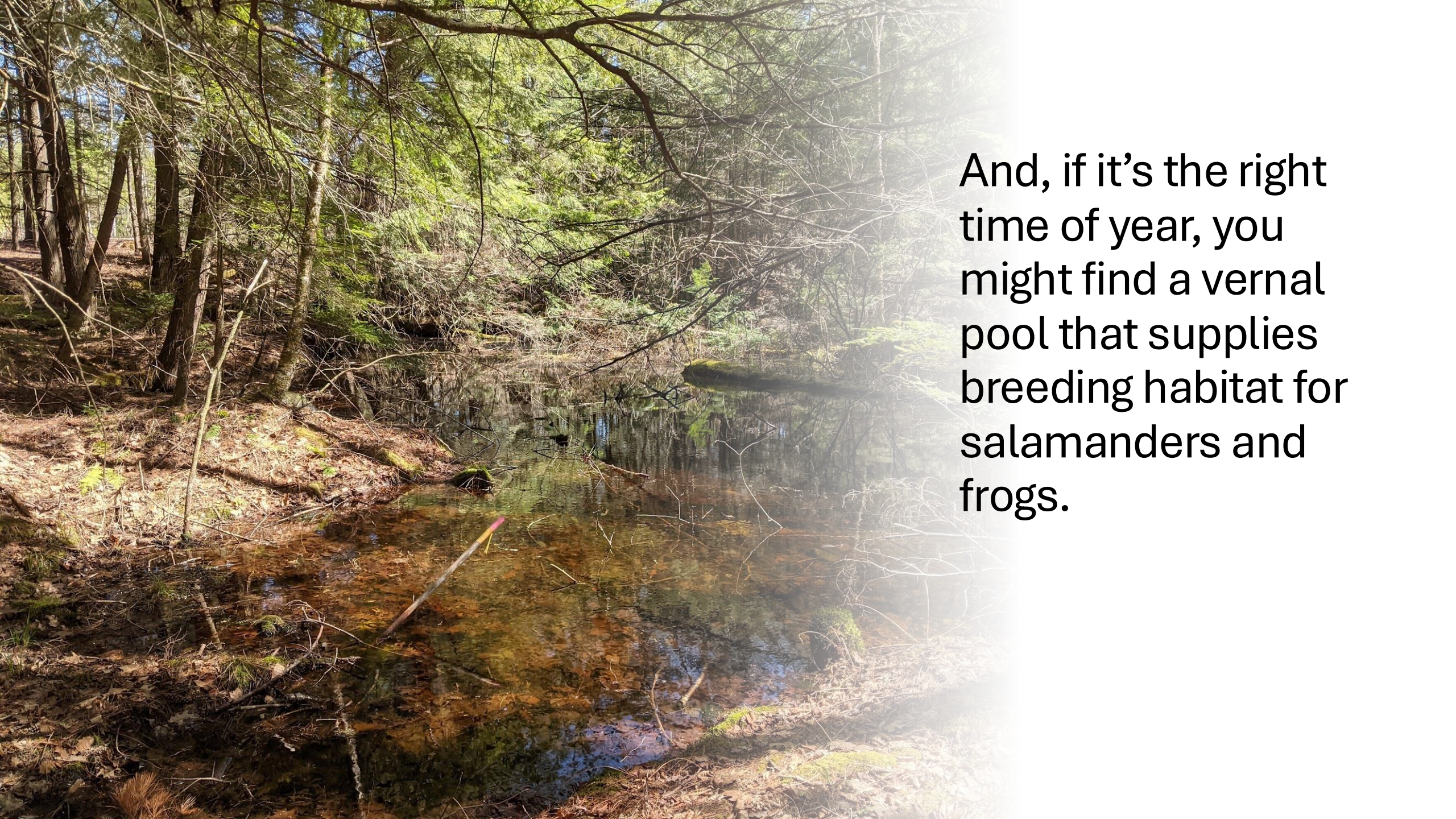


Descend the “Ledge Trail,” returning to the Western Town Forest Trail. Head east towards Mud Turtle Pond Rd.



Along the way,
you'll cross a
stream.





And, if it's the right time of year, you might find a vernal pool that supplies breeding habitat for salamanders and frogs.



Mud Turtle Pond Road is now a Class VI road.

In earlier times it provided passage from Whipple Hill Rd. to Orford's Strawberry Hill Rd.

During the 1800s, Mud Turtle Pond Rd. was home to three farms.

Today, only their cellar holes remain.



From the cellar holes, go north on Mud Turtle Pond Rd.

After about 100 yards, you'll see the Beaver Pond Trail marker on your right. Turn onto it and head east.

First, you'll pass one of several stream crossings that were upgraded in 2022 by the Upper Valley Trails Alliance's High School Trails Corps.

Above is a "before" photo; "work in progress" on your right, and...






The finished product!

More Upper Valley Trails Alliance's High School Trails Corps work:

Replacing the Whipple Brook footbridge.





In the summer of 2024, Lyme Scout Sebastian Bujarski and friends rebuilt the long-neglected scout camp. Here are some 'before' photos.



And here are photos, after restoration and ready for day-use. Be sure to get a fire permit first.



The image is a composite of two photographs. The left half shows a calm beaver pond in a forest, with a large log floating in the water and trees reflected in the surface. The right half shows a hiker from behind, wearing a blue long-sleeved shirt and a bright green backpack, walking through a forest of tall, thin trees. The text is overlaid on the bottom left of the image.

From the Scout Camp, it's a short walk past the beaver pond and up a short hill to the forest's Orfordville Rd trailhead.

Lyme Conservation Commission



For more information...

- about the Town Forest trails, visit the Trail Finder website at <https://www.trailfinder.info/trails/trail/lyme-town-forest>

- about the Upper Valley Trail Alliance High School Corps, visit Upper Valley Trail Alliance's programs at <https://www.uvtrails.org/programs-events/high-school-trail-corps/>